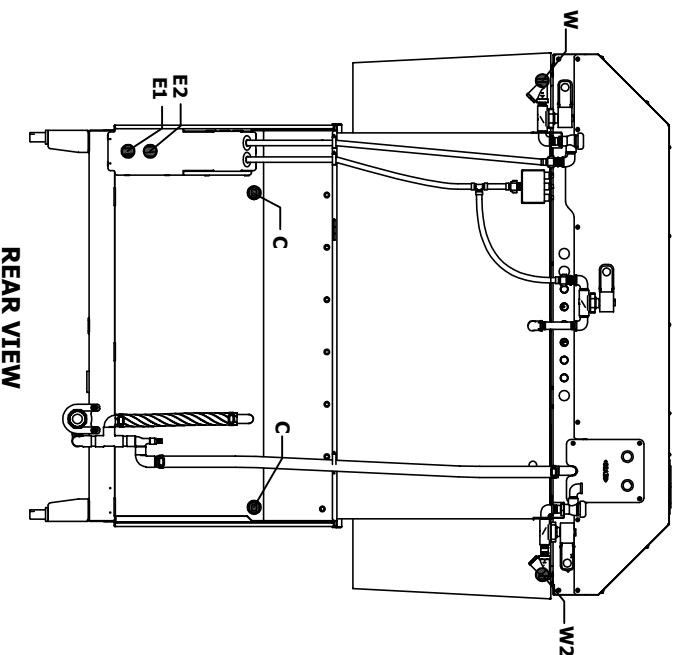
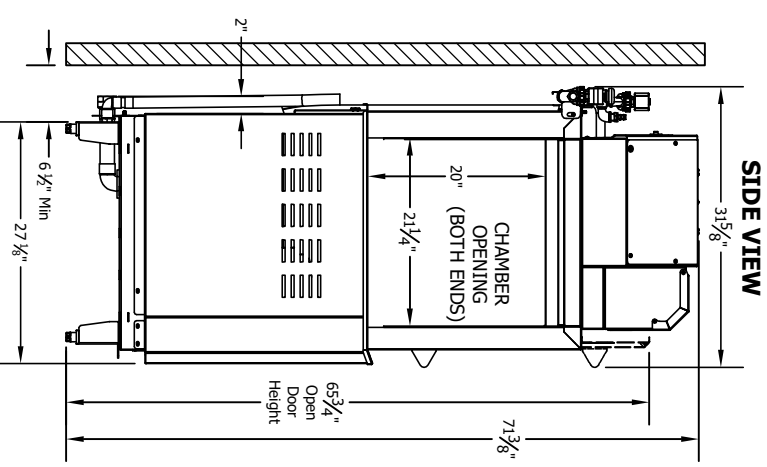
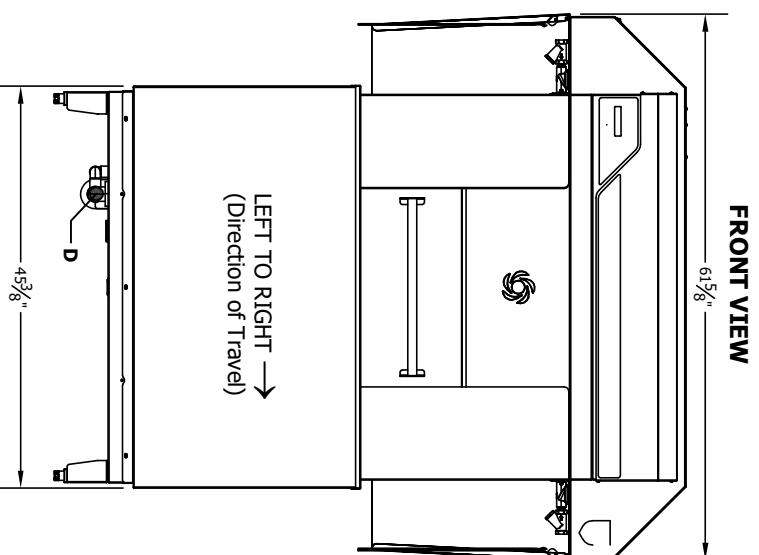
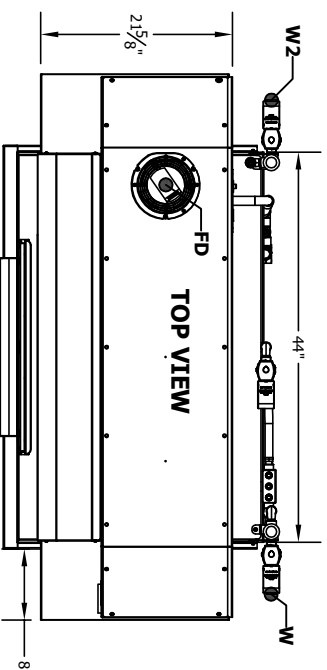



INSTALLATION CONNECTIONS	
Description	Note
D DRAIN CONNECTION	1-1/2 F-NPT
W HOT WATER INLET (110° F MIN.)	1/2 F-NPT
E1 MAIN ELECTRICAL (SINGLE & 2-POINT)	1-3/8 HOLE
E2 BOOSTER ELECTRICAL (2 PT ONLY)	1-3/8 HOLE
C CHEMICAL LINE & SIGNAL ACCESS	1/2 HOLES (4)
W2 COLD WATER INLET (75° F MAX.)	1/2 F-NPT
FD FAN DISCHARGE (VG ONLY)	6" CLEARANCE

NOTES:

1. ALLOW 6" MINIMUM CLEARANCE ABOVE THE VENT FAN DISCHARGE
2. ALLOW 24" MIN. CLEARANCE BELOW DISH TABLE TO SERVICE ELECTRICAL EQUIPMENT



**FEET ARE ADJUSTABLE ± 1 IN
REFER TO SPEC SHEET FOR ALL UTILITY REQUIREMENTS
PLEASE CONTACT FACTORY FOR TECHNICAL QUESTIONS**

UNLESS OTHERWISE SPECIFIED, DIMENSIONS ARE IN INCHES	
TOLERANCES	
.XX	XXX FRACTIONS 1/16
.002	.005 .01 .32 .125
THE INFORMATION ON THIS DRAWING IS THE PROPERTY OF THE COMPANY AND MAY NOT BE DISCLOSED TO ANY OTHER PARTY WITHOUT THE CONSENT OF THIS COMPANY. IT IS NOT TO BE USED FOR THE MANUFACTURE OF ANY PARTS OR FOR THE REPRODUCTION OF THIS DRAWING OR FOR THE REPRODUCTION OF ANY INFORMATION THEREON WITHOUT THE WRITTEN PERMISSION OF THE COMPANY. ANY REPRODUCTION OF THIS DRAWING OR ANY INFORMATION THEREON WITHOUT THE WRITTEN PERMISSION OF THE COMPANY IS PROHIBITED.	
 INSINGER MACHINE CO. P.O. BOX 100, WILSON, PA. 15395	
PROVIN BY:	DATE: 02/04/25
SCALE:	1:1
DWG NUMBER:	1001-10095
REVISION DATE:	02/04/25
DESCRIPTION:	High Temperature Back Compactor Drawing Material With Vapor Guard Option
REV:	A
SHEET 1 OF 1	